



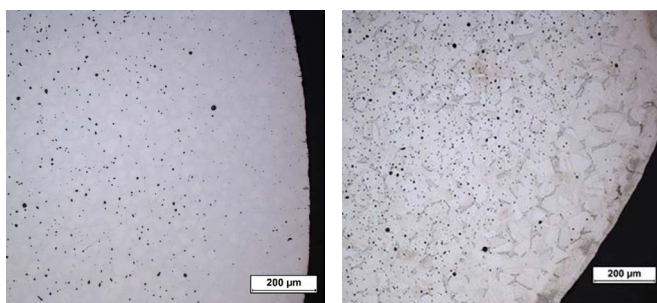
forMIM® 316L-FS17C.00 – Feedstock

Product information

316L is one of the most common stainless steel characterised by providing very high corrosion resistance at medium strength. It is normally used in high demanding applications found in medical, dental, luxury and IT related segments.

Höganäs specially water atomised 316L powder is developed to provide high sinterability and limit furnace maintenance.

Höganäs catalytic feedstock is engineered to give consistency, mold well and debind easily.



forMIM 316L-FS17C.00 sintered **unetched** and **etched** microstructure at 7.9 g/cc density

forMIM 316L-FS17C.00 – Specification

Finished product	316L-FS17C.00
Chemistry	
Cr	16.0-18.0 %
Ni	10.0-14.0 %
Mo	2.0-3.0 %
Cu	NA
Si	< 1.0 %
C	< 0.03 %
Mn	< 2.0 %
Powder properties	
TD g/cm ³	min. 4.55 g/cc
d50	13-16 micron

Typical values as sintered				
Material	Density %	UTS MPa	YS MPa	Elongation %
316L	99	505	175	50

Sintering conditions, 1.380°C, 2h, H₂

Feedstock properties	
Density	> 7.8 g/cc
Melt Flow Rate	(300-1.300) g/10min
Tool factor	1.1629-1.1710